



Scan the QR code  
and read more about  
this system

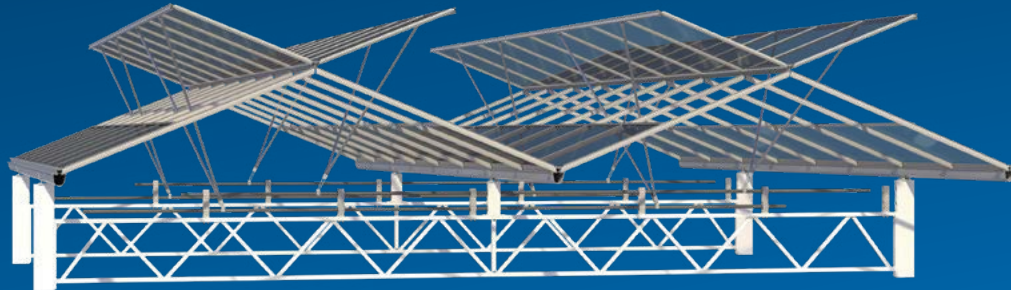
**VAN DER VALK**



**HORTI SYSTEMS**

# The best solution for...

**Extended** ventilation capacity in Venlo greenhouses



## ValkTwinRail

The ValkTwinRail (VTWR) ventilation mechanism offers the same quality benefits as the ValkTrussRail (VTR) system, but takes them even further. Whereas the ValkTrussRail mechanism consists of alternating ventilation windows on both sides of the ridge, the ValkTwinRail has continuous window on both sides of the ridge. This provides greater ventilation capacity.

### Unique core components

#### ValkPushRod

The **ValkPushRod** is the rod used to push up the ventilation window and works best in combination with the ValkStabiMax hinge.

- ✓ custom calculated and produced
- ✓ strong
- ✓ prevent frost damage

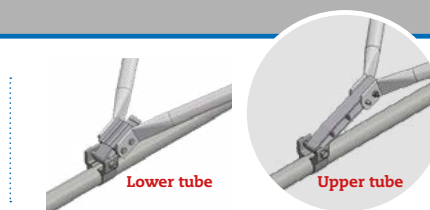


 **ValkPushRod**

#### ValkStabiMax

The **ValkStabiMax** hinge ensures a strong connection between the ValkPushRods and ValkDriveTube.

- ✓ prevents twisting from ValkPushRods
- ✓ uniform ventilation openings
- ✓ ensures perfect sealing

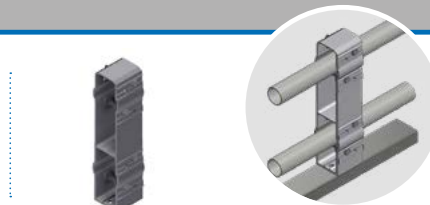


 **ValkStabiMax**

#### ValkRailBracket

The **ValkRailBracket** guides the ValkDriveTube.

- ✓ compact design
- ✓ prevents wear
- ✓ versatile in use



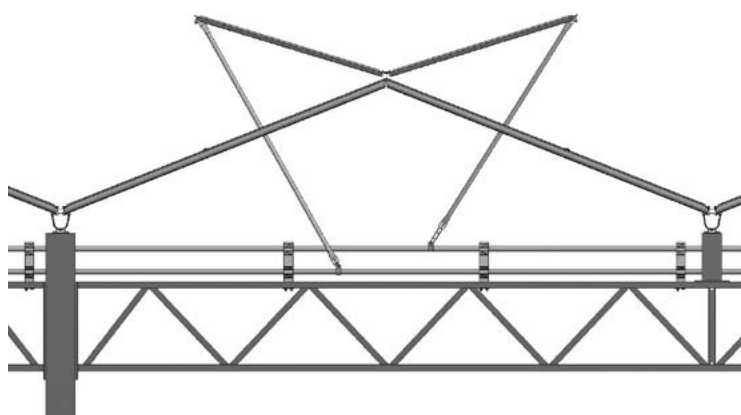
 **ValkRailBracket**

# ValkVentDrive | VTWR

The right drive system for any Venlo greenhouse.  
For the ValkTwinRail ventilation mechanism, this is Twin Type 1 | Push/pull.

## Twin Type 1

Two push/pull tubes that moves the vents open and closed

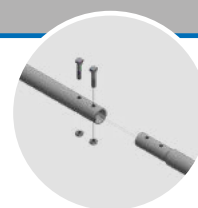


## Unique drive components ▼

### ValkDriveTube

The ValkDriveTubes are reliably reduced to guarantee consistent quality.

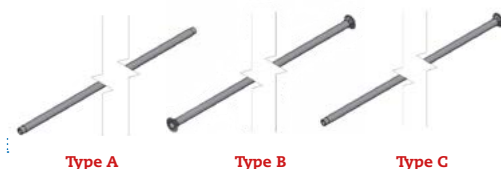
- ✓ various standard lengths
- ✓ easy mounting
- ✓ galvanized Contiflo heavy duty II tube, prevents white rust



### ValkDriveShaft

The ValkDriveShaft is produced using a welding robot to guarantee consistent quality.

- ✓ custom-made
- ✓ high-quality European steel
- ✓ straight-welded ridges and pinions for a motionless drive



 ValkDriveShaft